



Pomin Park + Polaris Creek Project



Nicole Cartwright

Executive Director

Office: 530.543.1501 x111 | ncartwright@tahoercd.org

Pomin Park + Polaris Creek Project



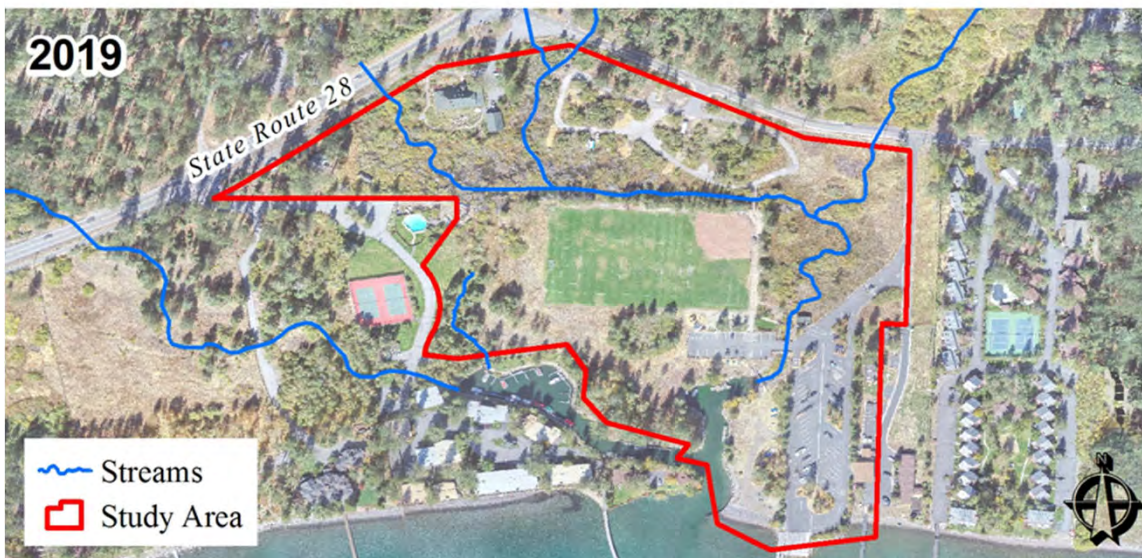
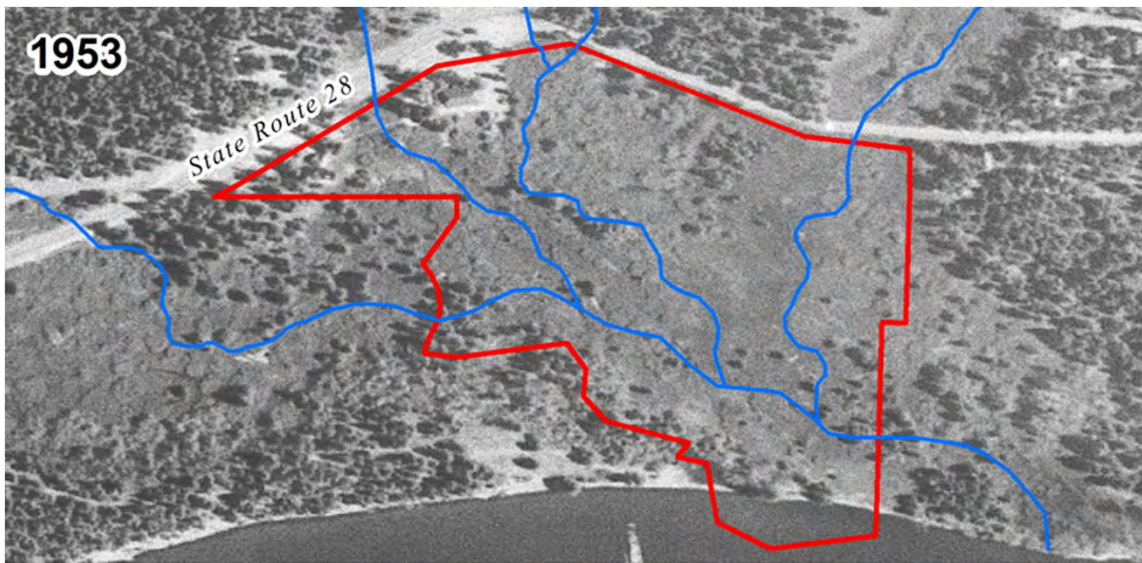
Small Creek. Big Opportunity

The North Tahoe Community has an opportunity to be part of restoring the natural function of Polaris Creek and Wetland while also preserving the recreational amenities associated with Pomin Park.

- Project partners have convened to investigate the feasibility of restoring the creek and wetland and relocating park amenities. Project partners include Tahoe RCD (convener), Conservancy (funder), TCPUD, State Parks and Placer County (landowners or managers)
- The construction of the ball field constrains Polaris Creek and causes seasonal flooding on the fields and campground, keeping them waterlogged, unsafe and unusable.



Pomin Park + Polaris Creek Project



Built infrastructure

- Boat ramp
- Condos/homes
- Campground
- Ball field

Pomin Park + Polaris Creek Project



Goals

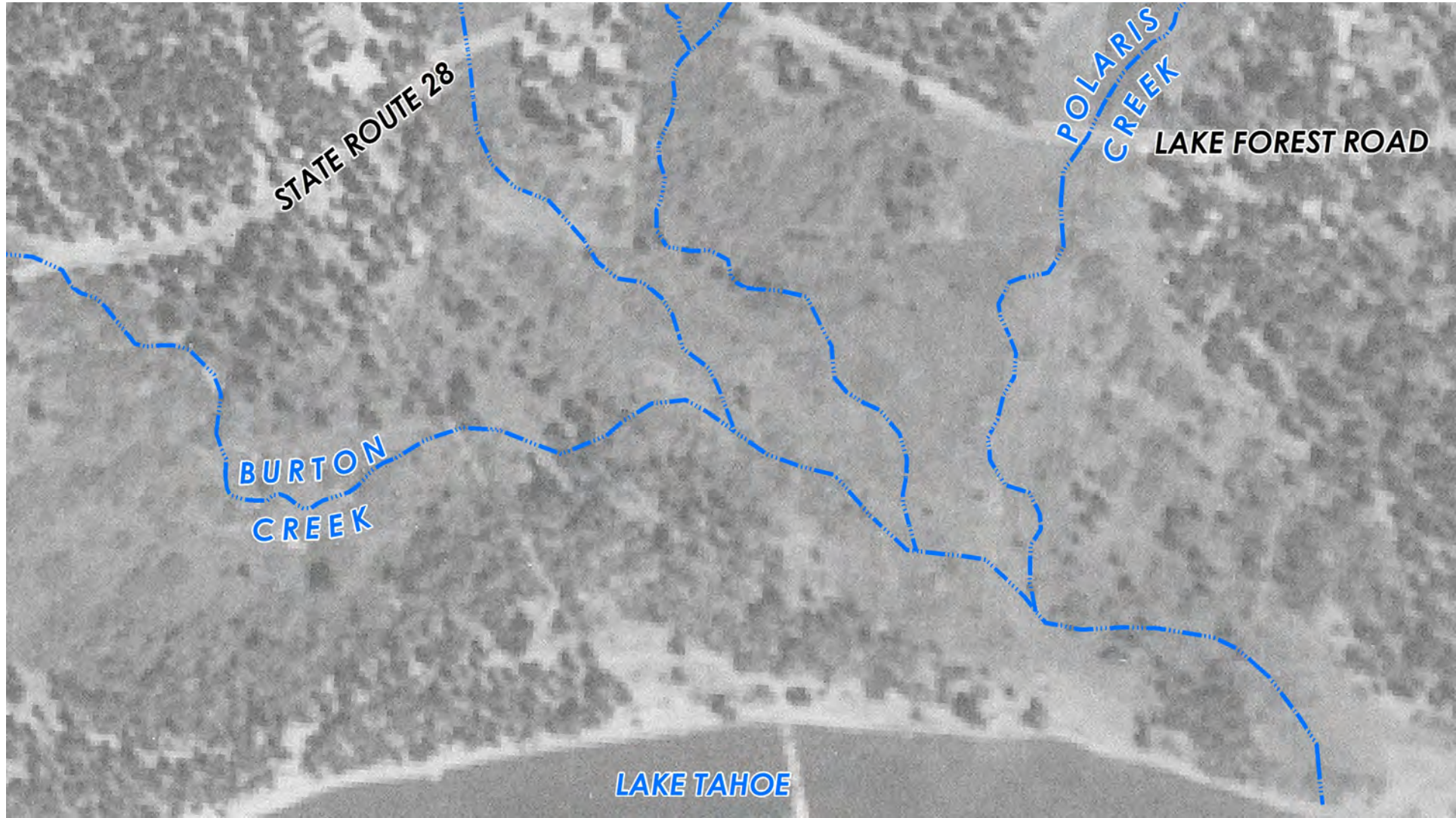
- Investigate restoration options of one of Lake Tahoe's important, yet overlooked, tributaries, Polaris Creek.
- Potential relocation of Pomin Park's ball field, park and campground would provide the opportunity for full restoration of Polaris Creek – improving Lake clarity by restoring a natural wetland and improving wildlife and meadow habitat.
- The project seeks a collaborative approach to protect North Tahoe's environment and community resources. This includes soliciting input from neighbors, community members, youth sports community and others throughout the process, which is currently in an early stage of development.

Pomin Park + Polaris Creek Project

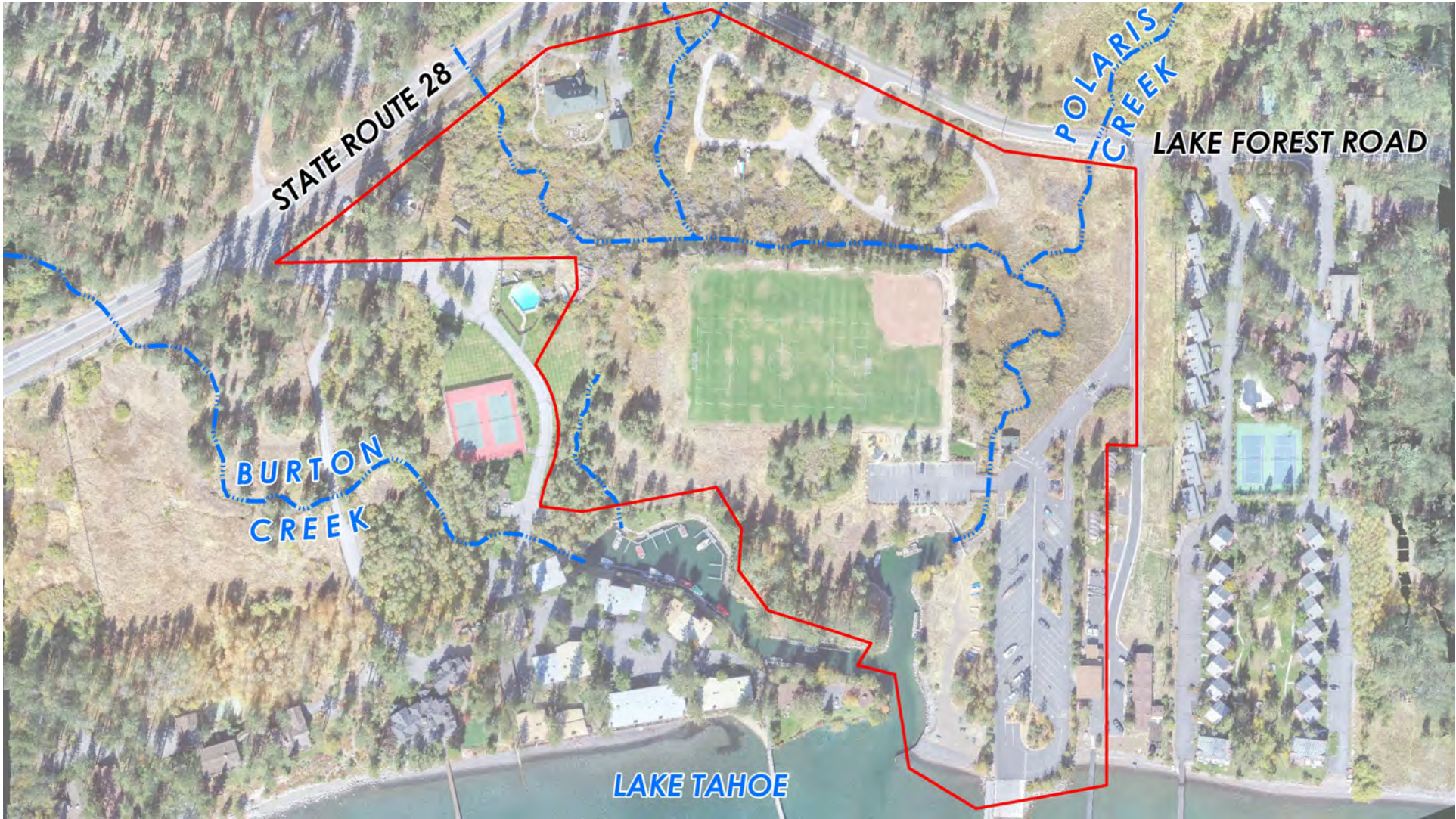


Restoration Concepts









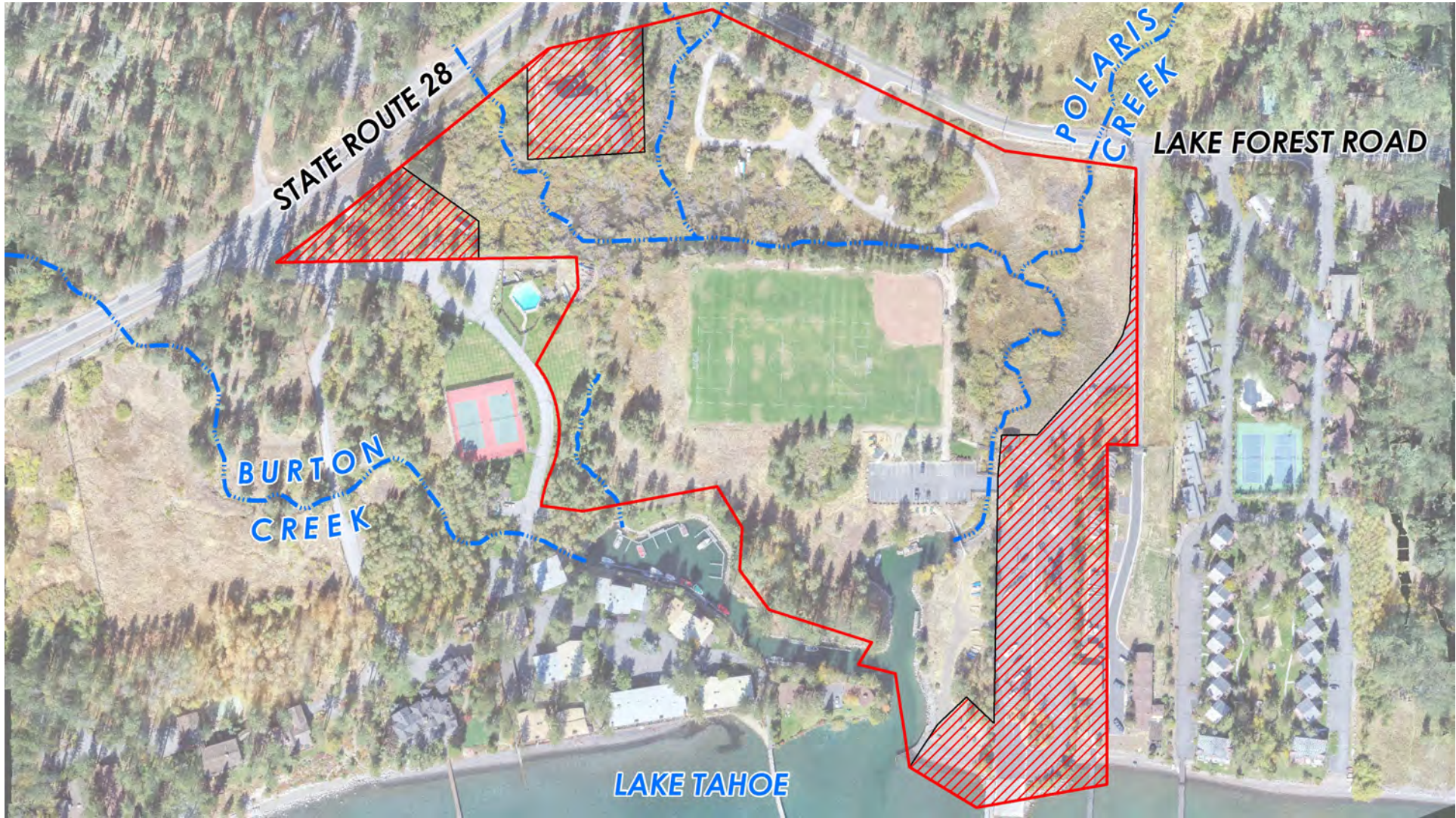
STATE ROUTE 28

POLARIS CREEK

LAKE FOREST ROAD

BURTON CREEK

LAKE TAHOE



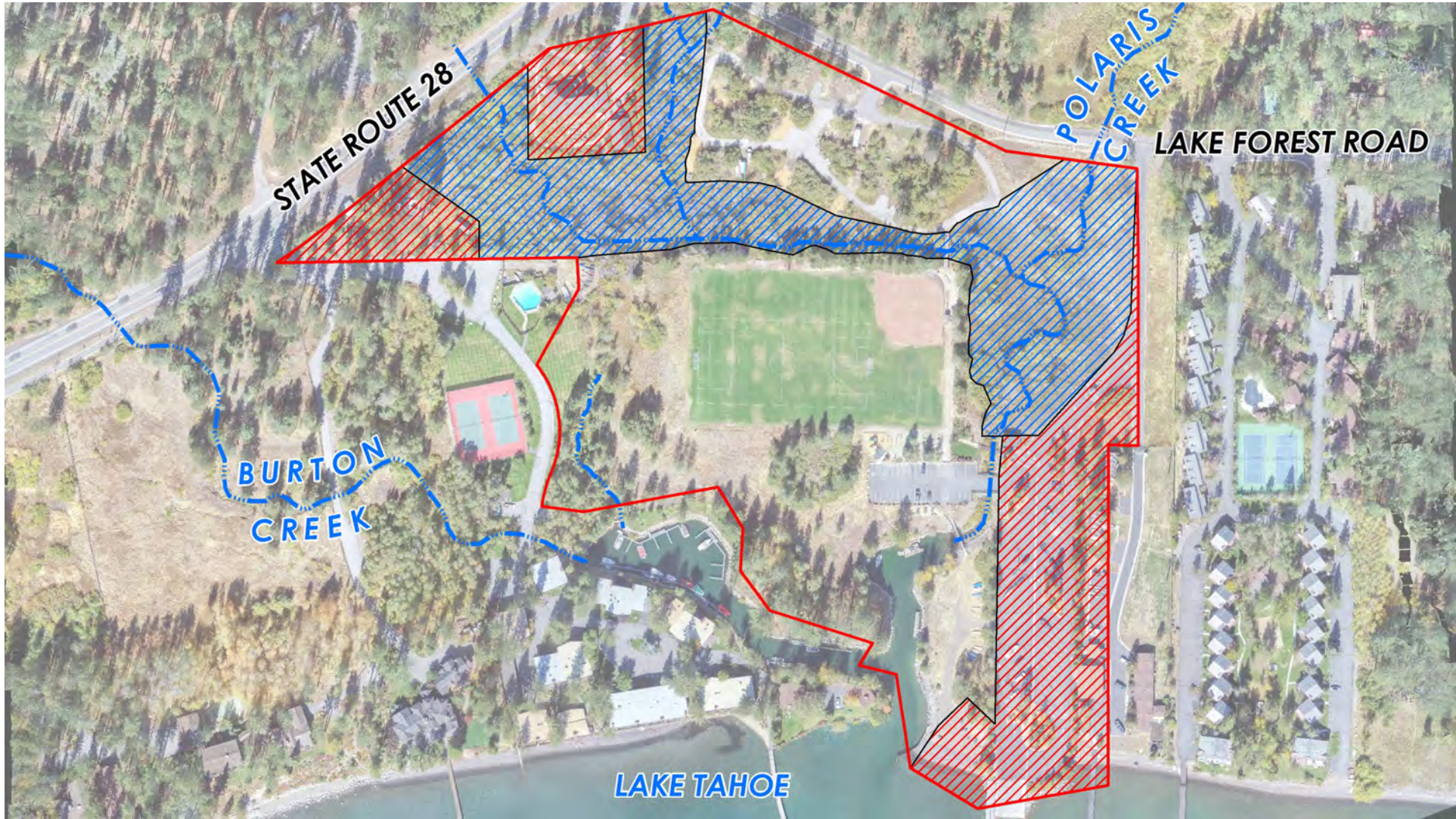
STATE ROUTE 28

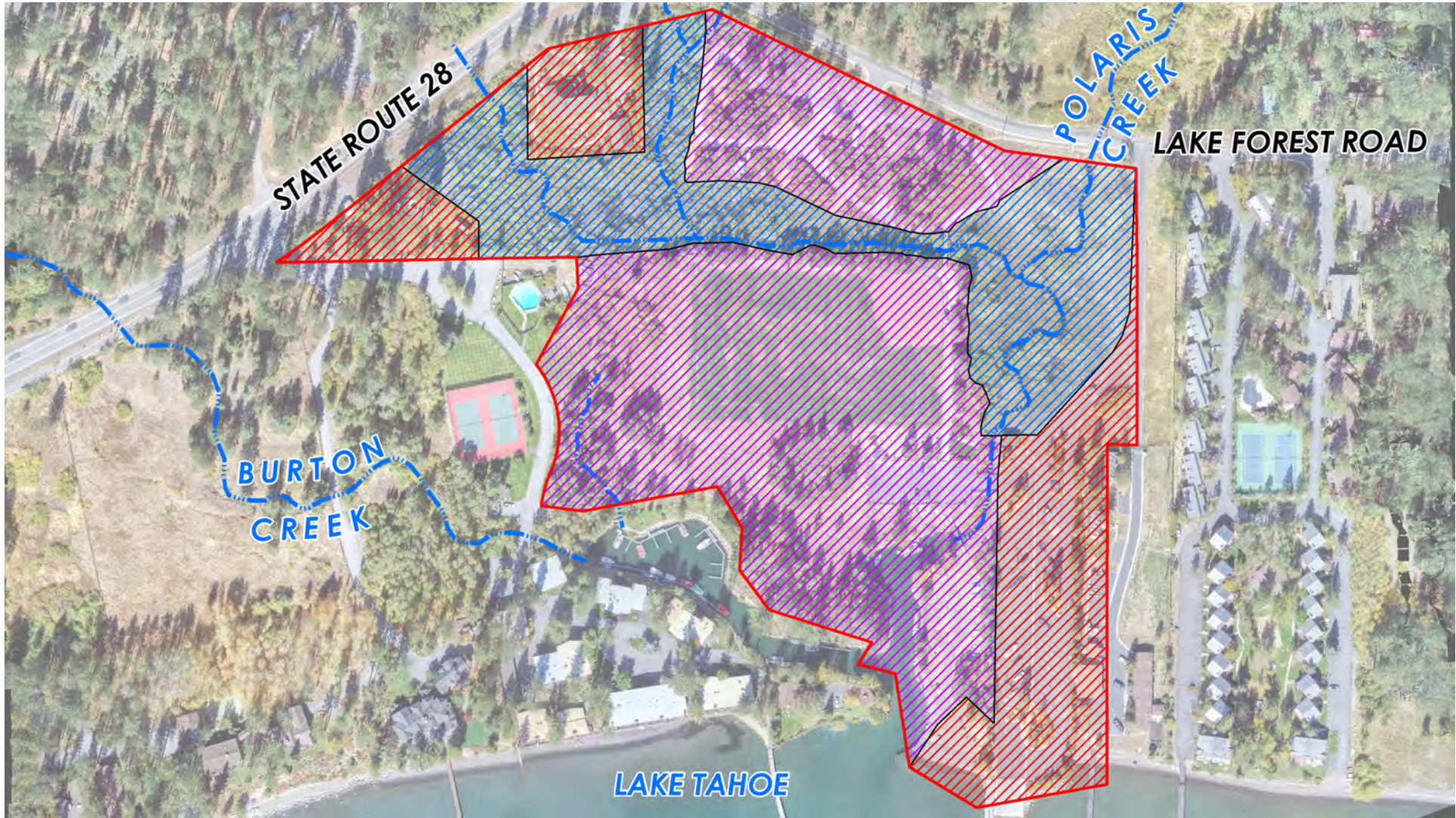
POLARIS CREEK

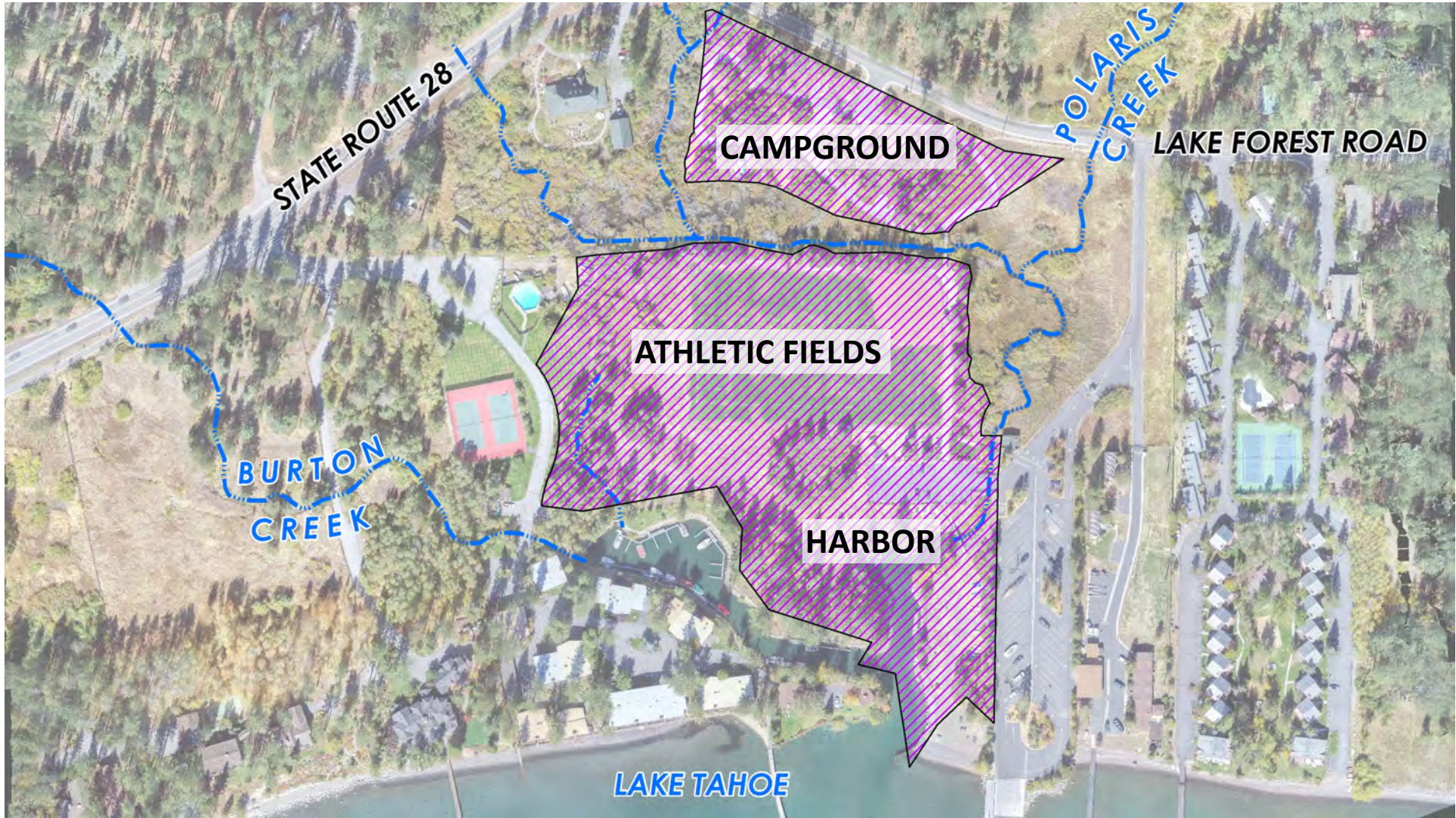
LAKE FOREST ROAD

BURTON CREEK

LAKE TAHOE







STATE ROUTE 28

CAMPGROUND

LAKE FOREST ROAD

POLARIS CREEK

ATHLETIC FIELDS

BURTON CREEK

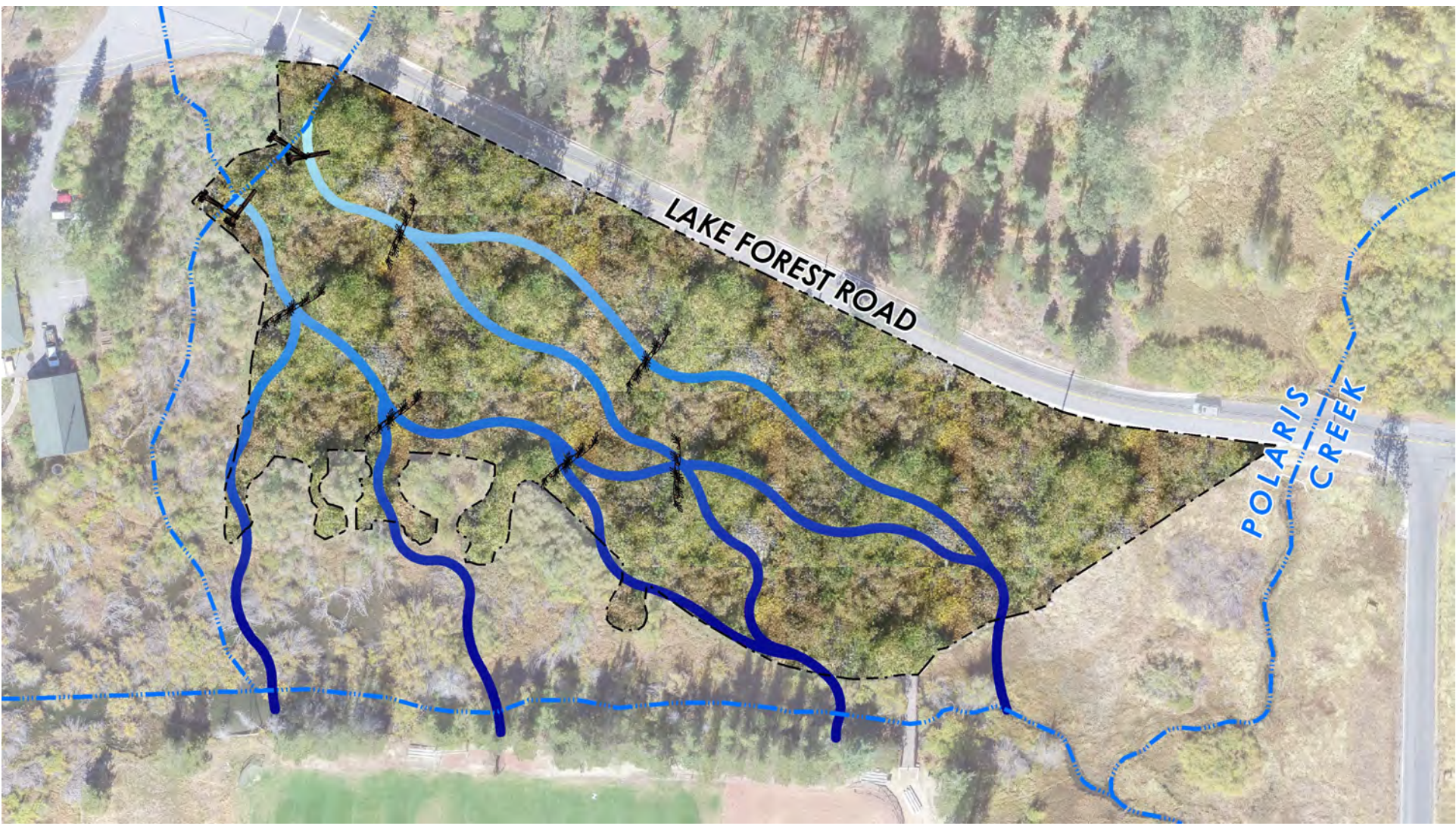
HARBOR

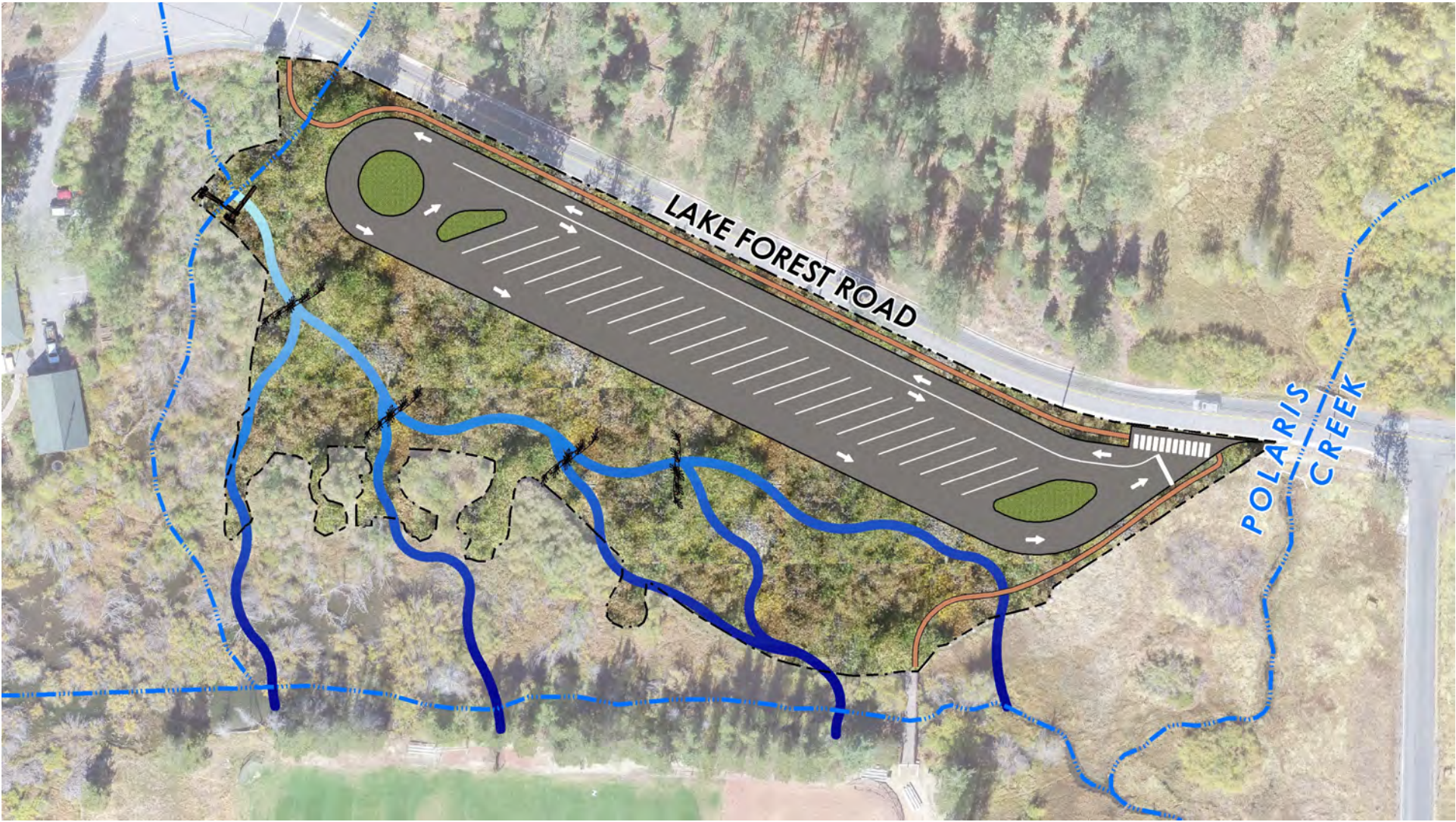
LAKE TAHOE











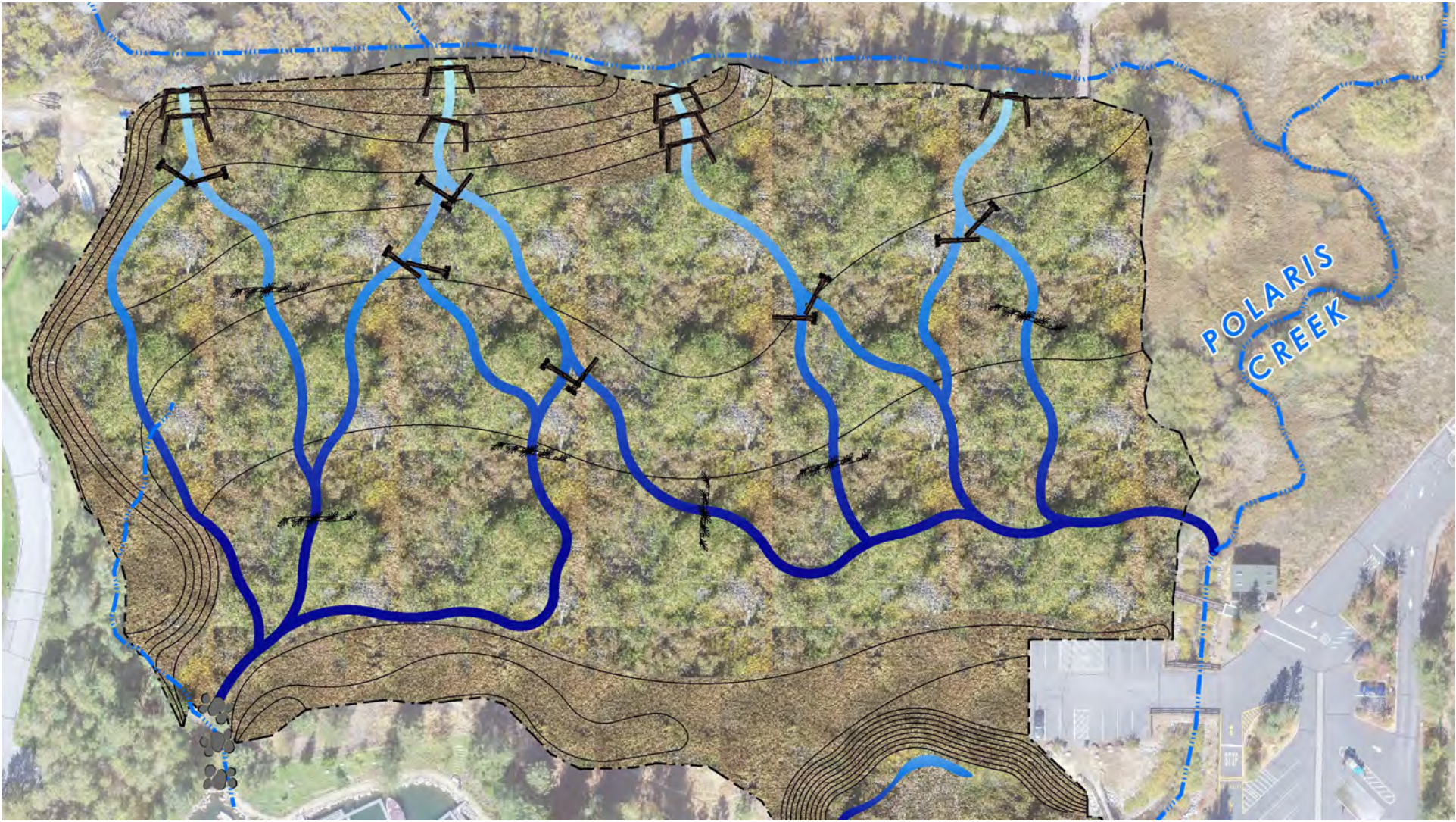
LAKE FOREST ROAD

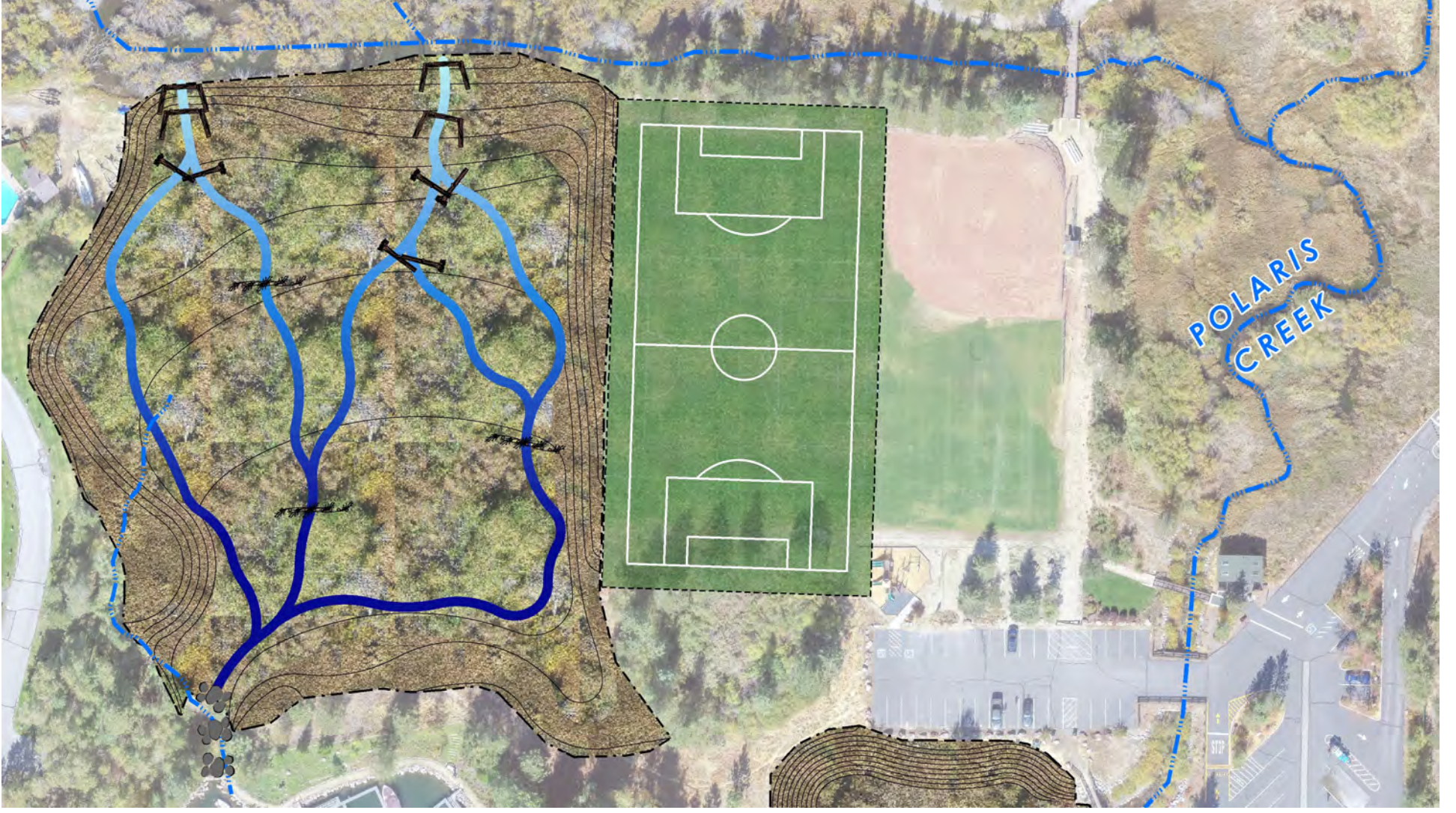
POLARIS CREEK











POLARIS
CREEK



BURTON
CREEK

POLARIS
CREEK

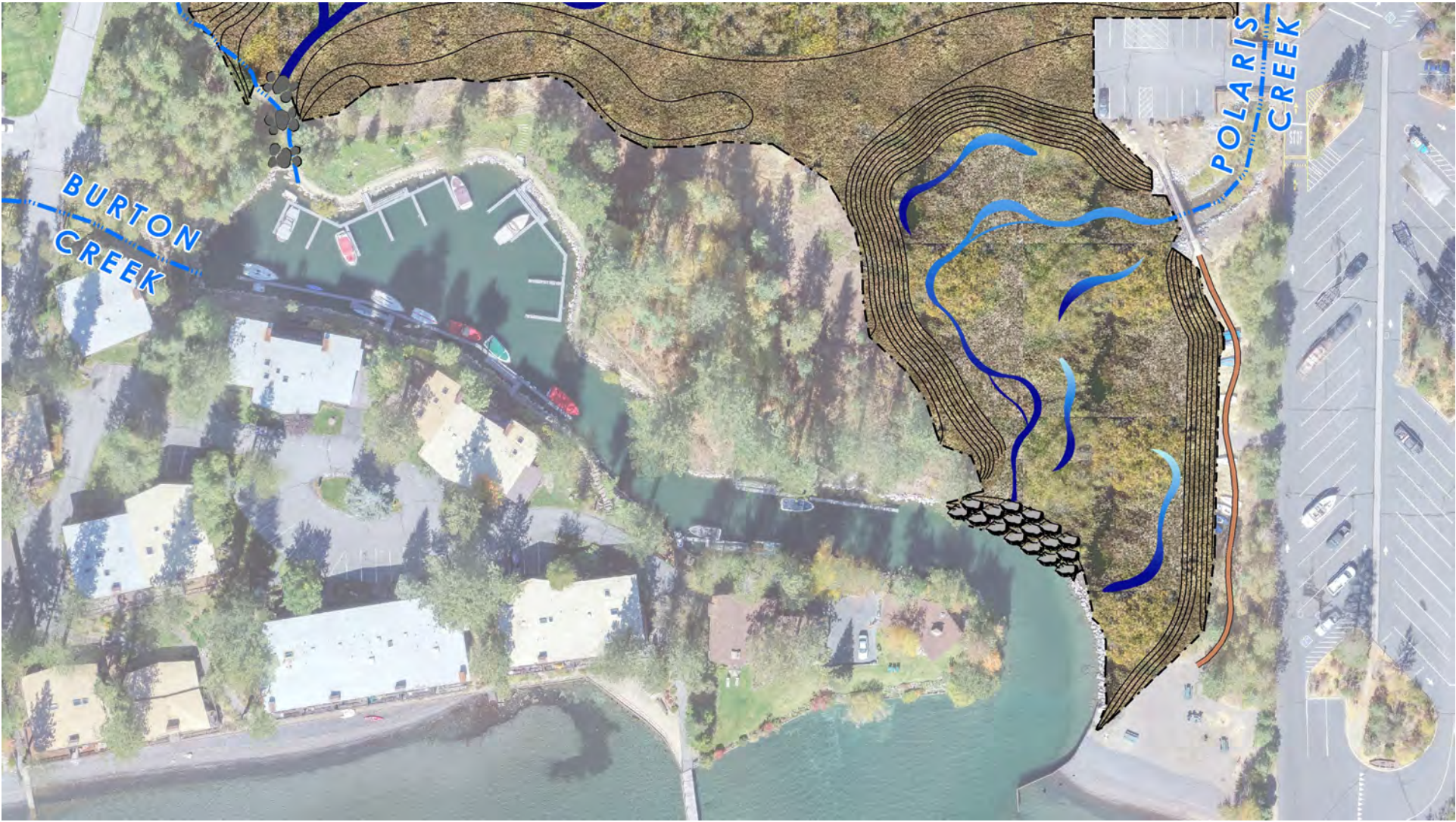




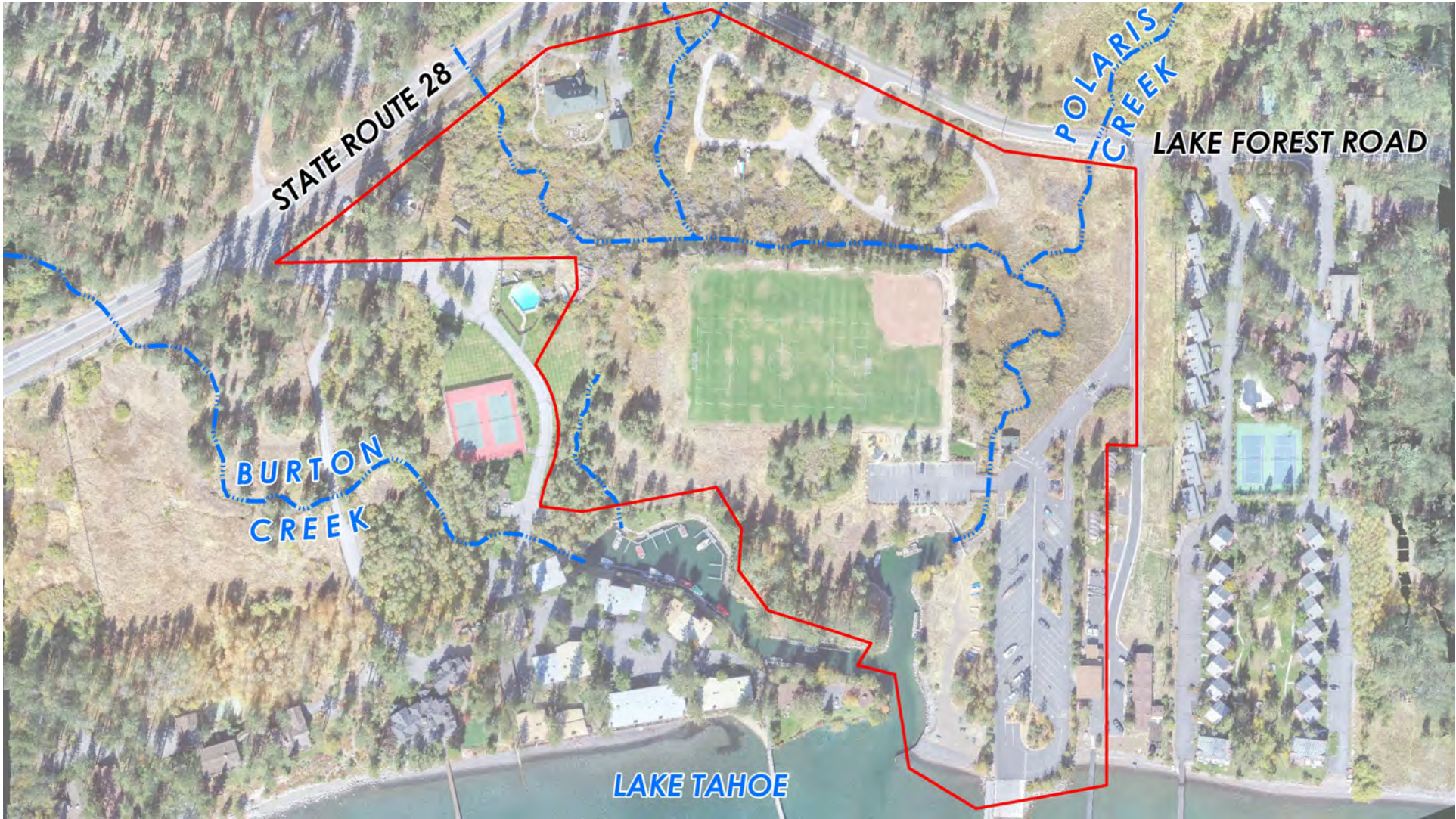
BURTON
CREEK

POLARIS
CREEK

NORTH







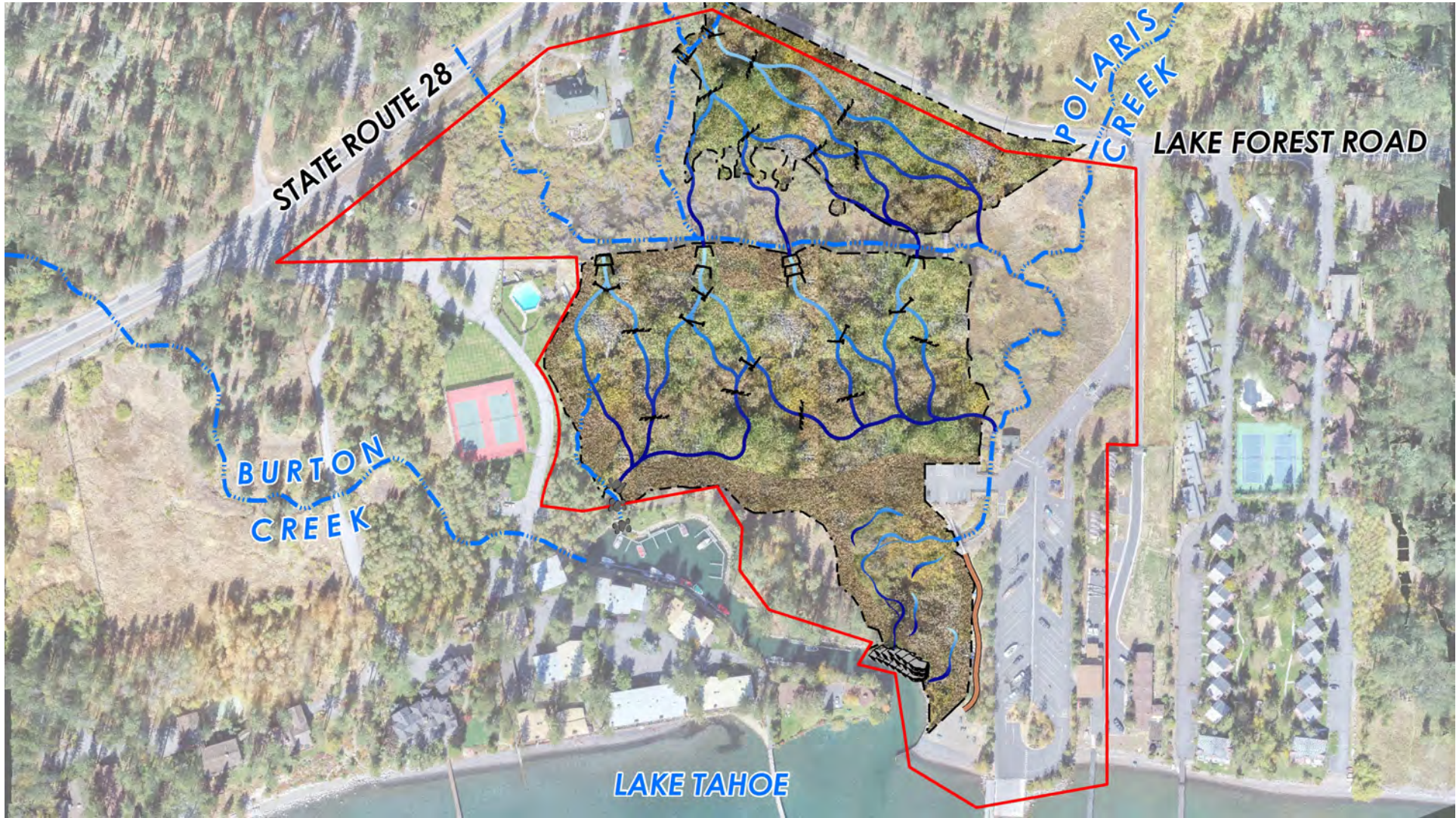
STATE ROUTE 28

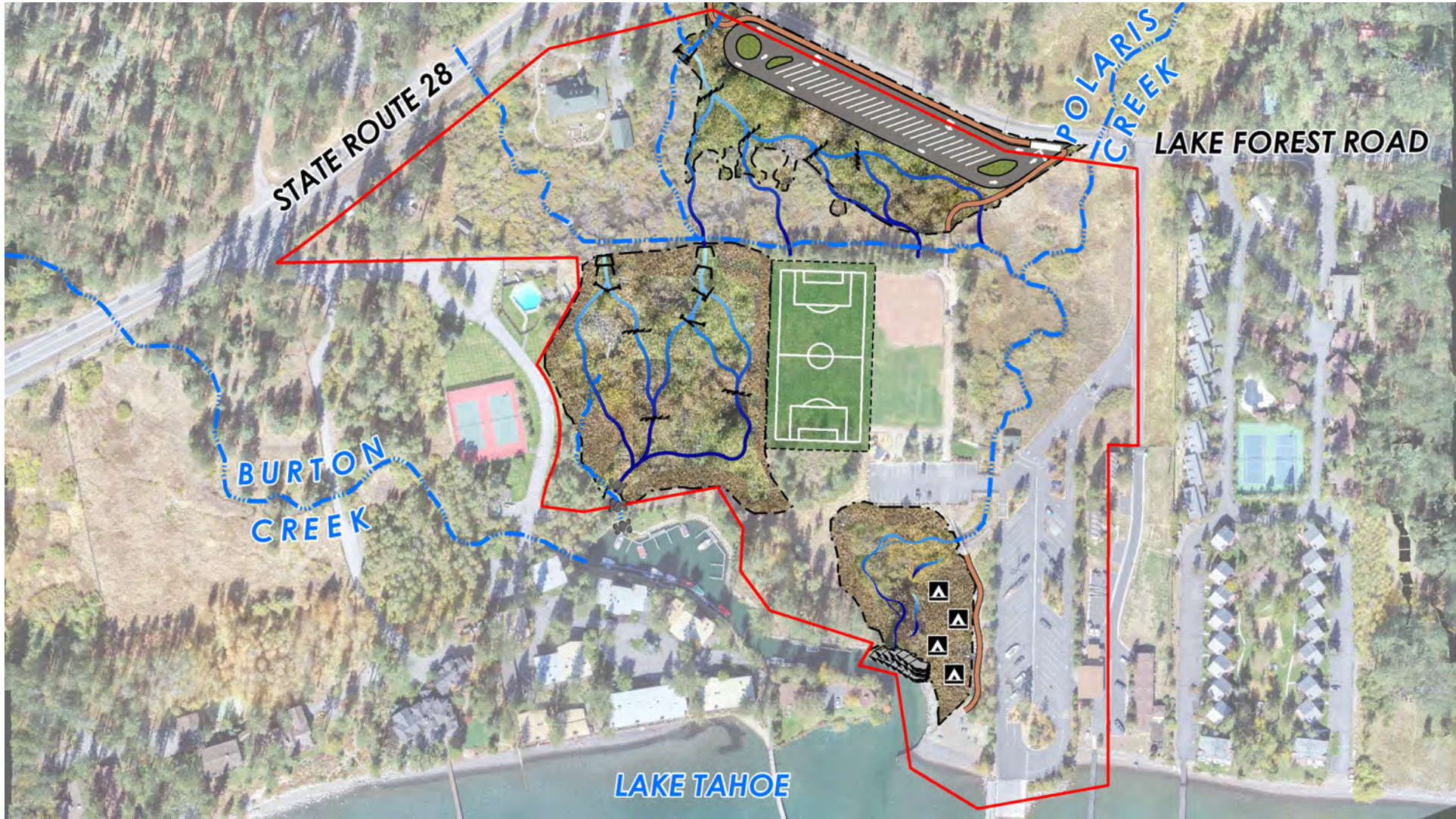
POLARIS CREEK

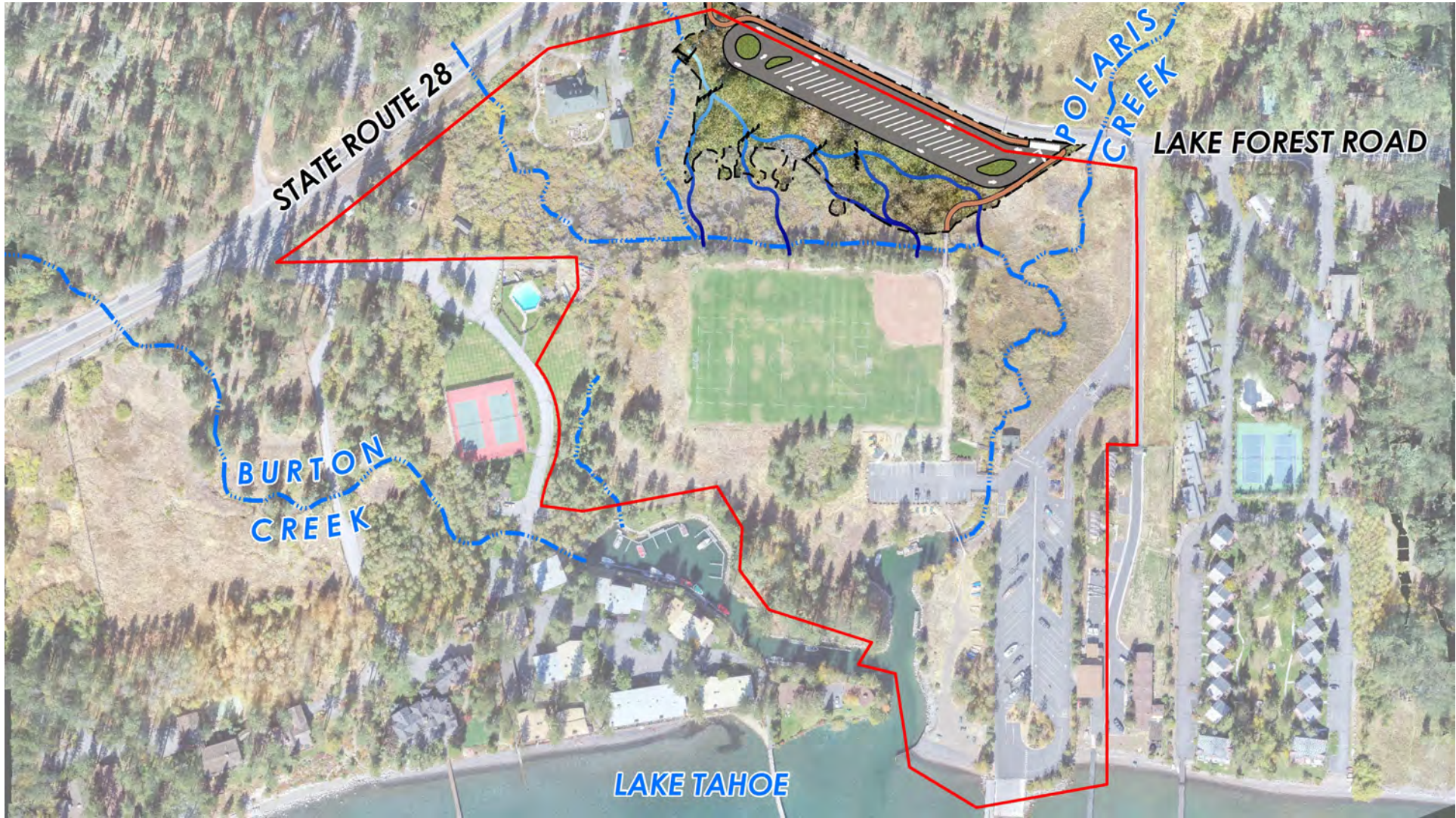
LAKE FOREST ROAD

BURTON CREEK

LAKE TAHOE







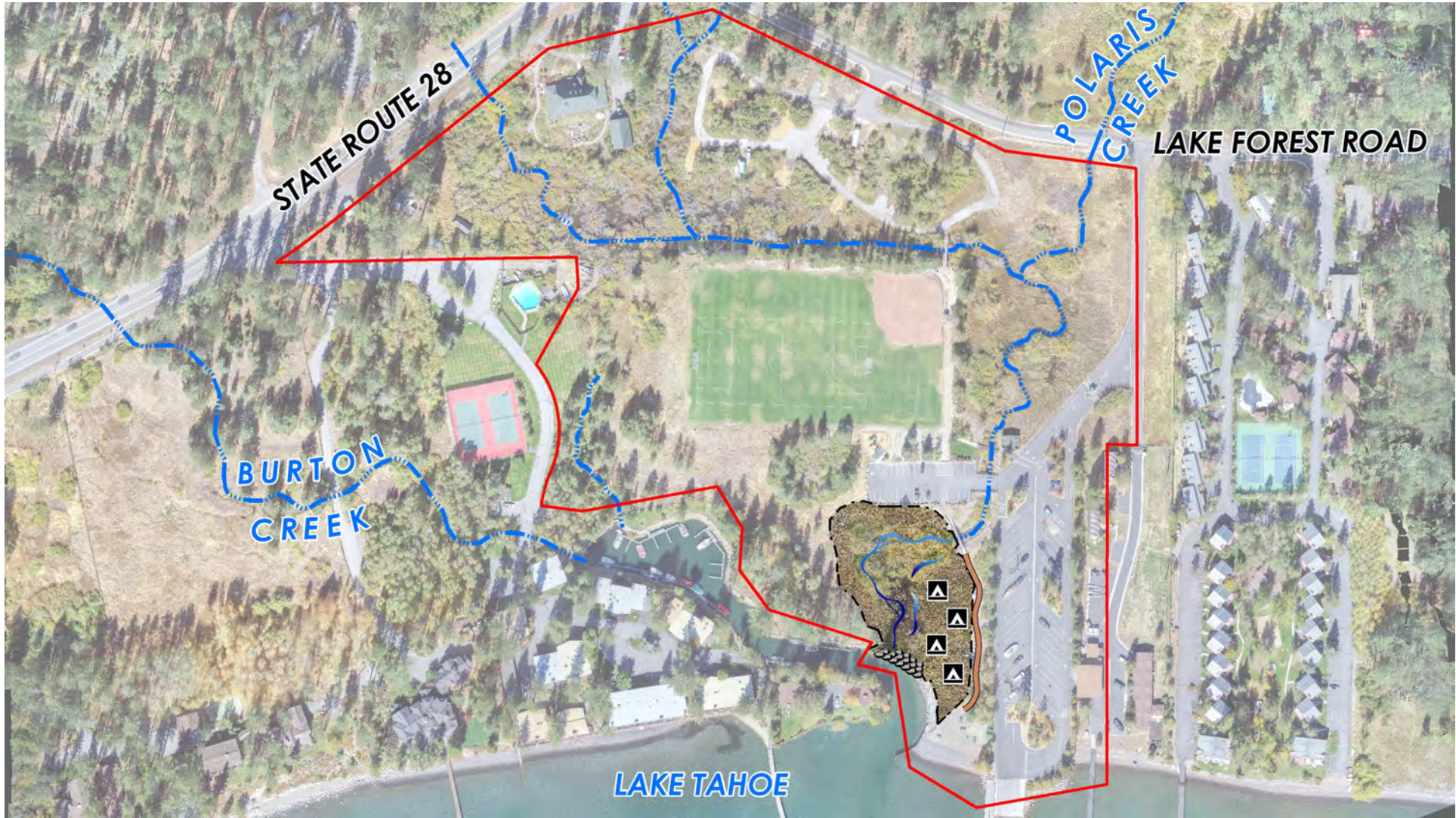
STATE ROUTE 28

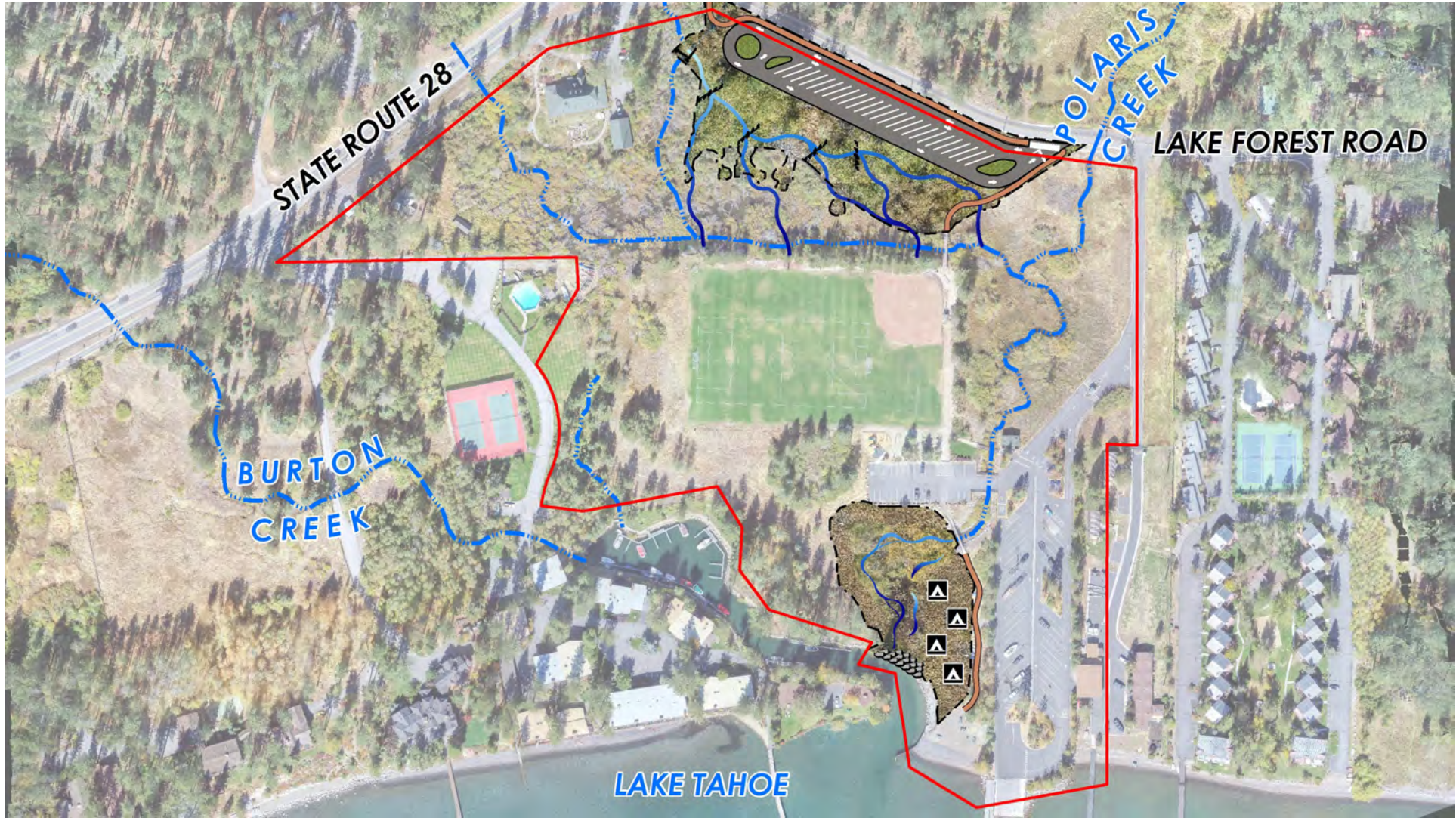
POLARIS CREEK

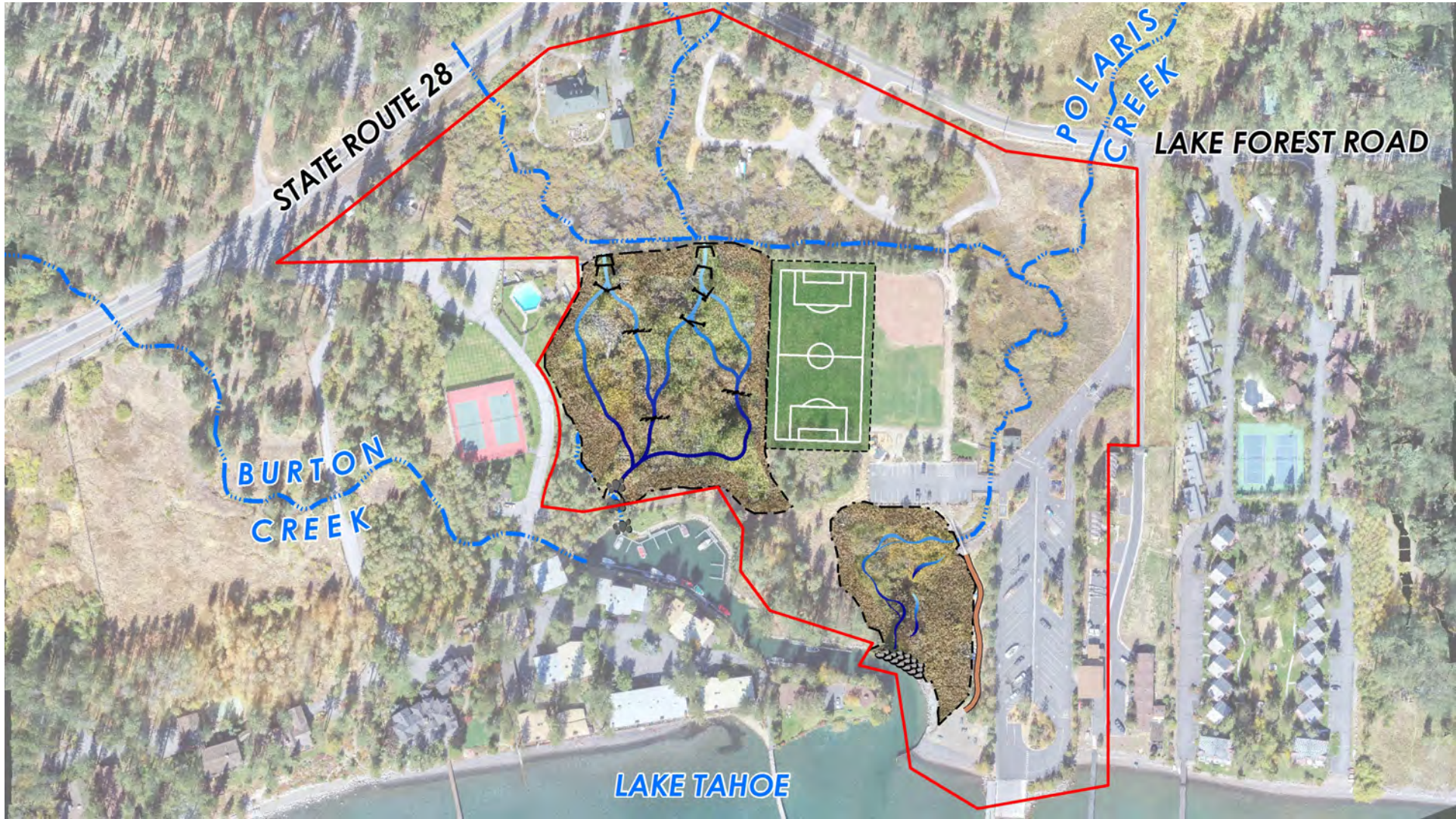
LAKE FOREST ROAD

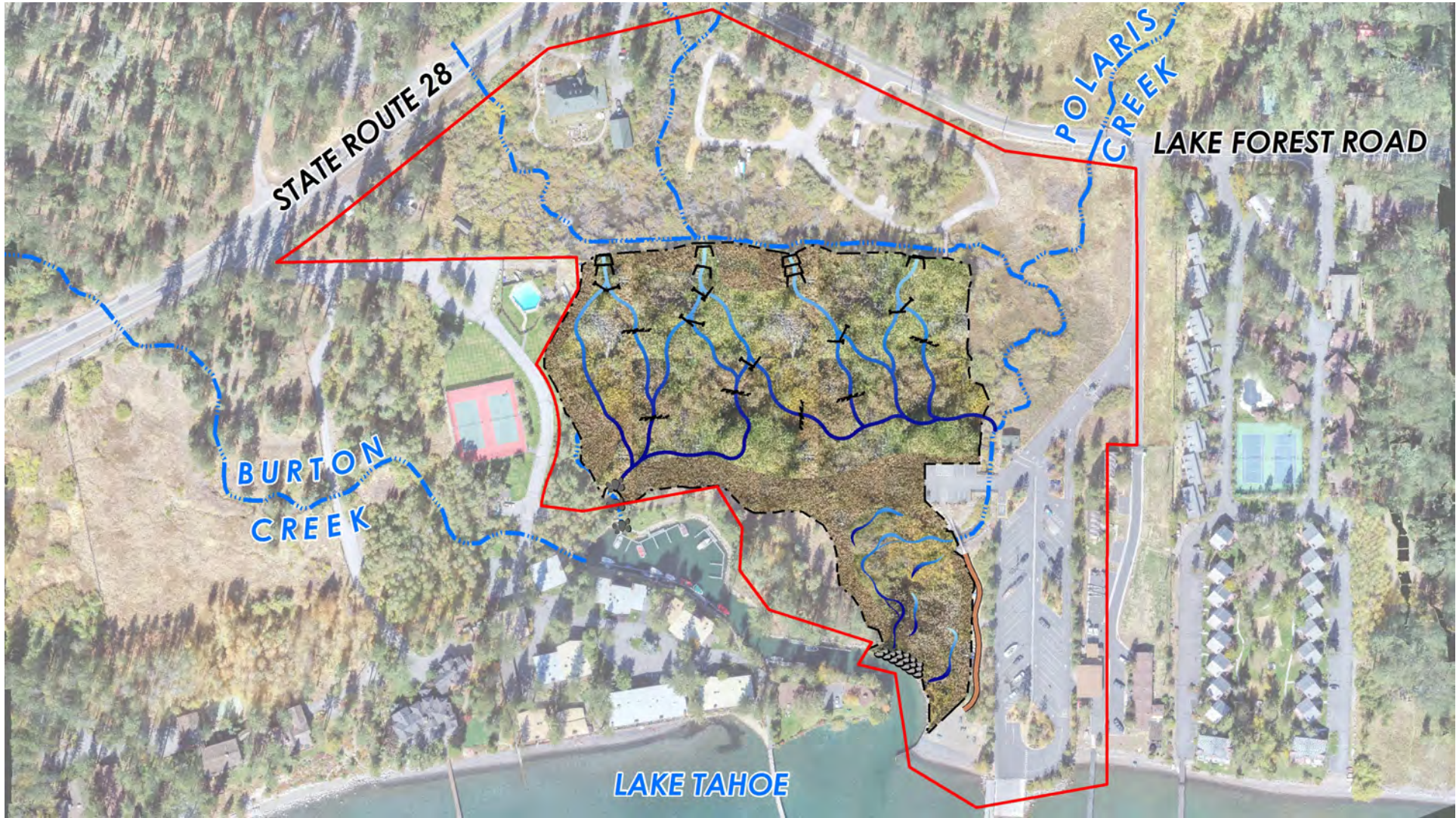
BURTON CREEK

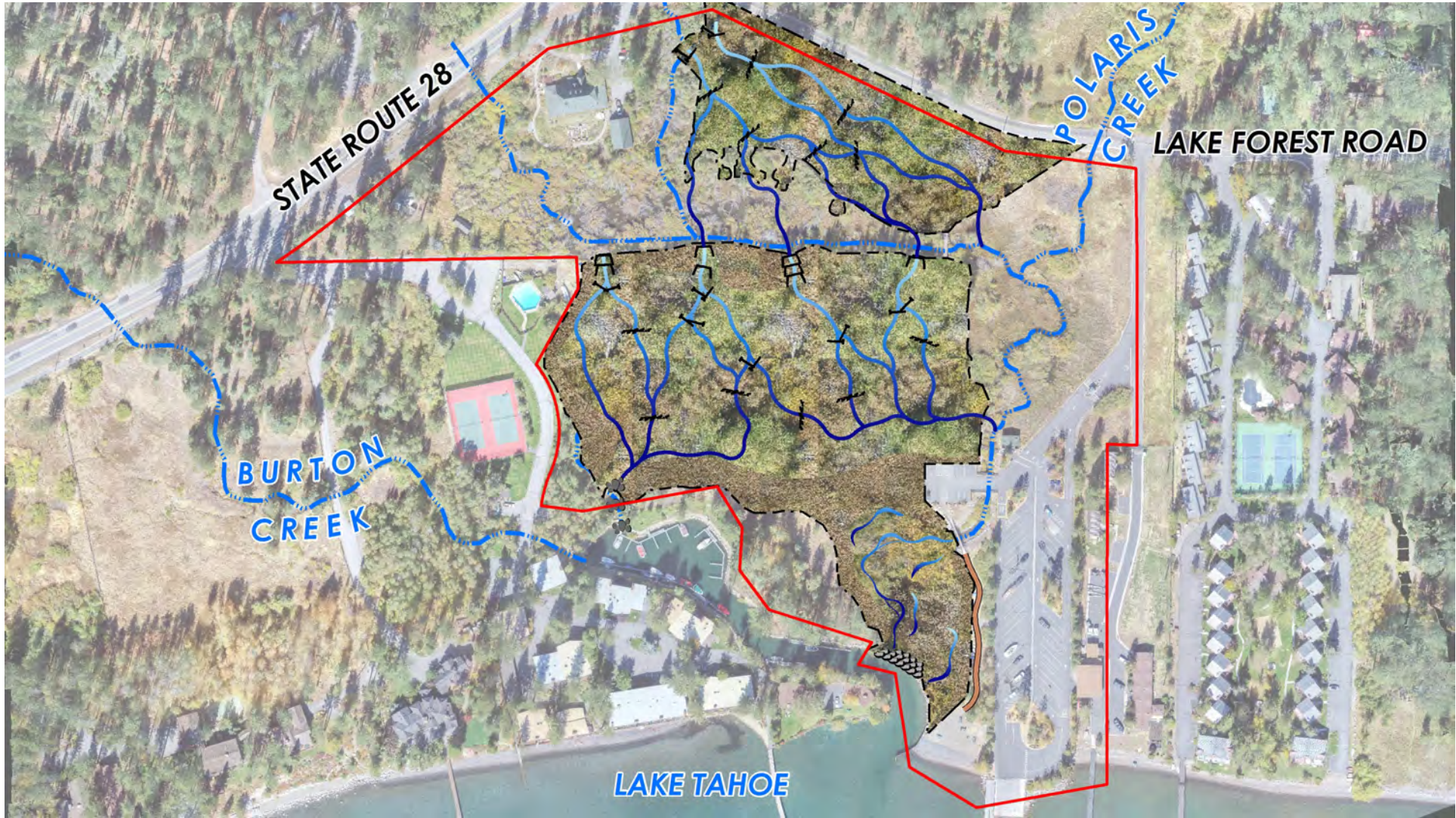
LAKE TAHOE











Pomin Park + Polaris Creek Project

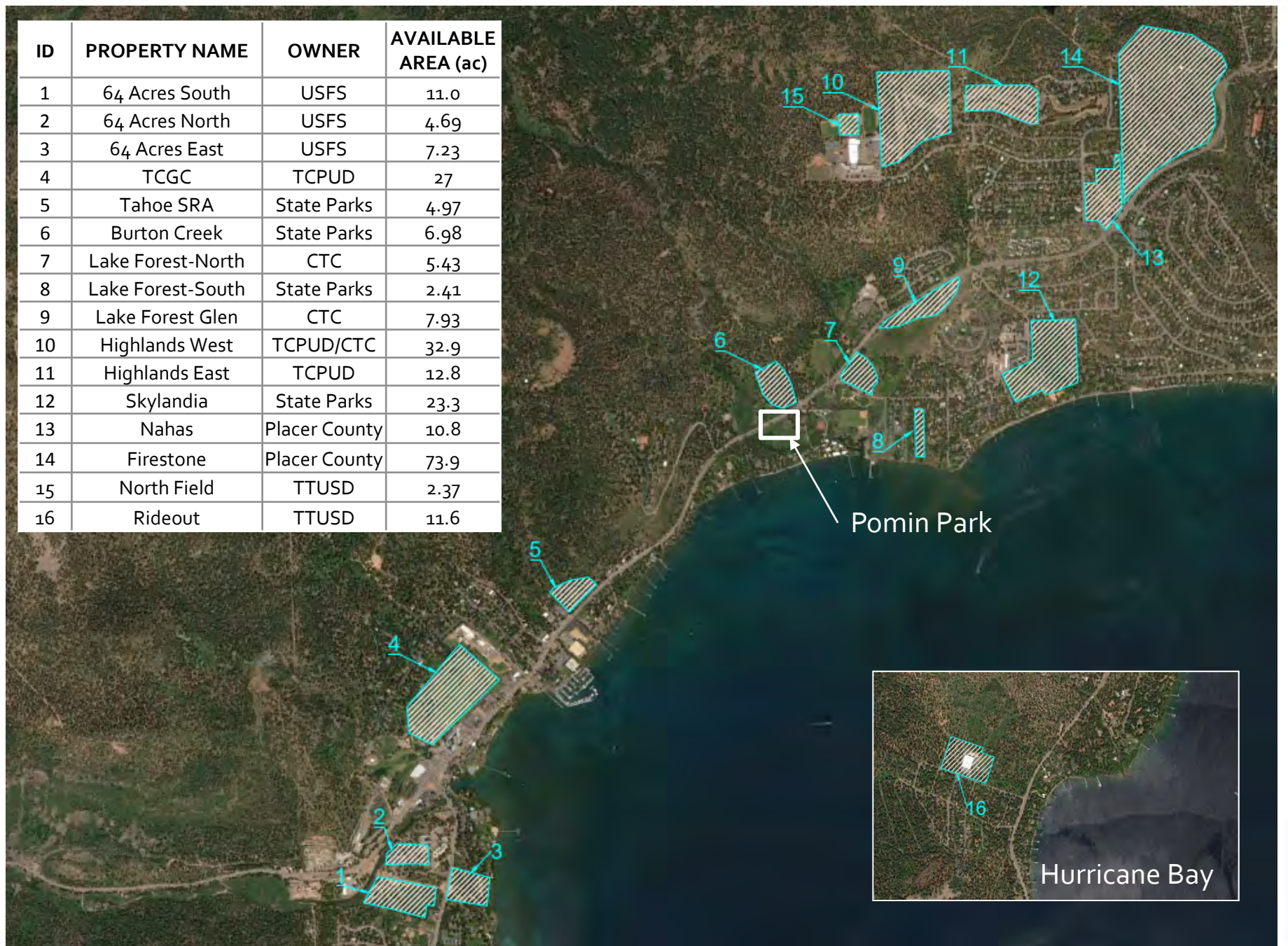


Relocation Potential

Preliminary Site Identification

- Desired Characteristic/Criteria:
 - Publicly-owned land
 - Proximity to Parking, Infrastructure, Existing Location or Town Center
 - Compatible with existing/surrounding uses
 - Lower Elevation
- Size Requirements
 - Athletic Field - U12 Soccer Field, Little League
 - Playground and Restroom
 - Campground: 20 Sites

ID	PROPERTY NAME	OWNER	AVAILABLE AREA (ac)
1	64 Acres South	USFS	11.0
2	64 Acres North	USFS	4.69
3	64 Acres East	USFS	7.23
4	TCGC	TCPUD	27
5	Tahoe SRA	State Parks	4.97
6	Burton Creek	State Parks	6.98
7	Lake Forest-North	CTC	5.43
8	Lake Forest-South	State Parks	2.41
9	Lake Forest Glen	CTC	7.93
10	Highlands West	TCPUD/CTC	32.9
11	Highlands East	TCPUD	12.8
12	Skylandia	State Parks	23.3
13	Nahas	Placer County	10.8
14	Firestone	Placer County	73.9
15	North Field	TTUSD	2.37
16	Rideout	TTUSD	11.6



Pomin Park Relocation

- Little League Field
 - 200-foot outfield fences
 - Room for dugouts, bleachers, and scoring booth
- U12 Soccer Field (AYSO)
 - Field of play 55 x 80 yards plus buffers
- Playground
 - Similar to existing
- Restrooms
 - Similar to existing

ATHLETIC FIELD OPTIONS

ID	PROPERTY NAME	OWNER	ADVANTAGES	LIMITATIONS
2	64 Acres North	USFS	Downtown, elevation, parking and infrastructure	Limited dimensionally, federal ownership
14	Firestone	Placer County	Existing and proposed uses, County ownership, parking and infrastructure	Elevation
15	North Field HS	TTUSD	Parking and infrastructure	Elevation, existing uses
16	Rideout	TTUSD	Parking and infrastructure	Location, limited dimensionally
1	64 Acres South	USFS	Downtown, elevation, parking and infrastructure	Low land capability, federal ownership
3	64 Acres East	USFS	Downtown, elevation	Adjacent uses, infrastructure and parking, federal ownership, limited dimensionally
4	TCGC	TCPUD	Downtown, parking and infrastructure	Not compatible with current uses
5	Tahoe SRA	State Parks	Location, infrastructure, elevation	Limited dimensionally, parking, low land capability
6	Burton Creek	State Parks	Location, elevation	Parking and infrastructure, not compatible with proposed uses
7	Lake Forest-North	CTC	Location, infrastructure	Grade and access, parking
8	Lake Forest-South	State Parks	Location, elevation	Adjacent uses, parking and infrastructure, limited dimensionally
9	Lake Forest Glen	CTC	Location, elevation	Parking and infrastructure, limited dimensionally
10	Highlands West	TCPUD/CTC	Parking and infrastructure	Elevation, not compatible with existing and proposed uses
11	Highlands East	TCPUD	Parking and infrastructure	Elevation, not compatible with existing and proposed uses
12	Skylandia	State Parks	Elevation, infrastructure	Existing uses, parking, adjacent uses
13	Nahas	Placer County	County ownership	Not compatible with proposed uses, limited dimensionally, grades







Little
League

U12 Soccer



Little
League

U12 Soccer

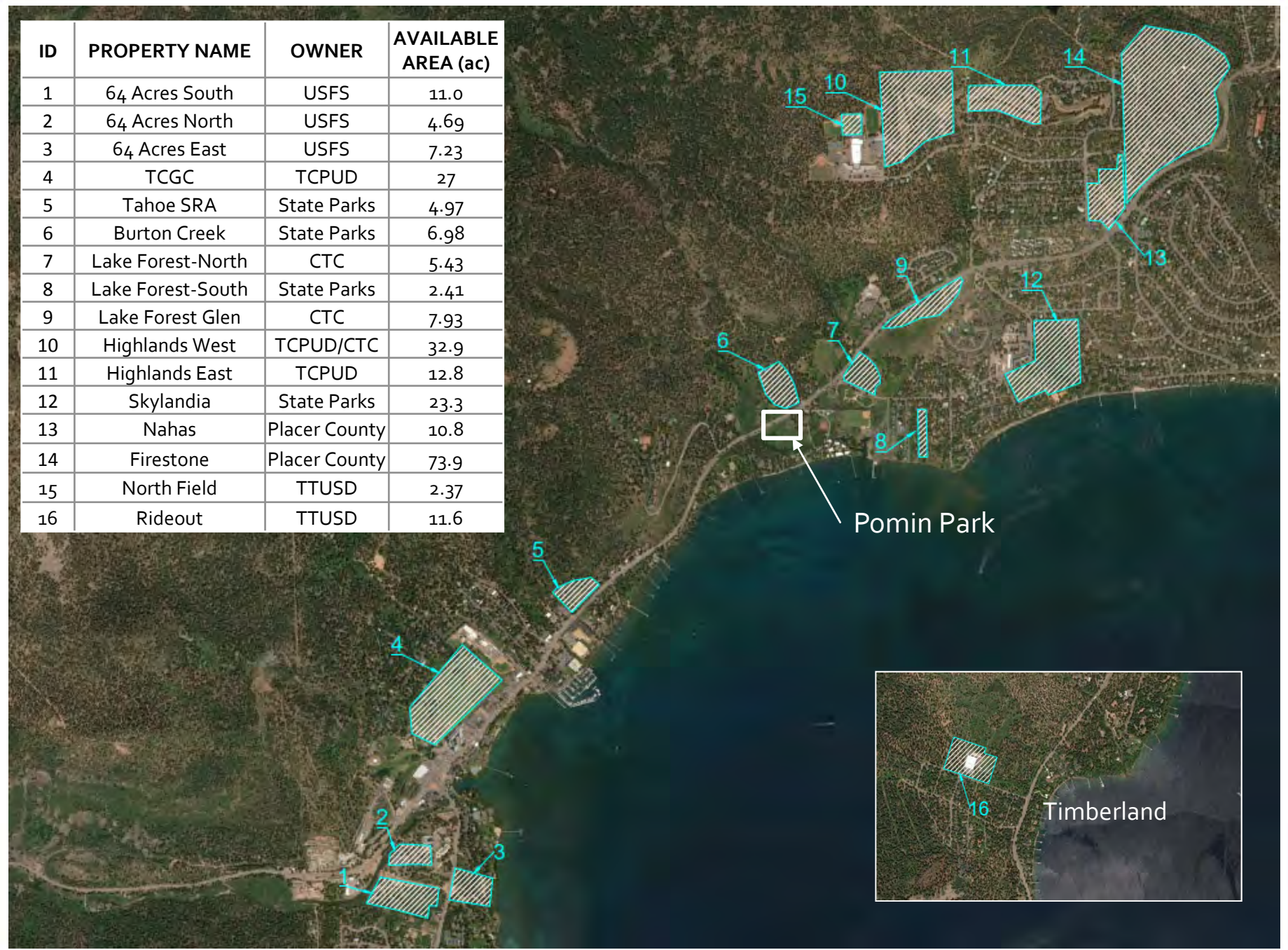
Campground Relocation

- 20 Campsites
- Location
- Accessibility
- Water and Restroom Access
- Connection to water trail?

CAMPGROUND OPTIONS

ID	PROPERTY NAME	OWNER	OPPORTUNITIES	CONSTRAINTS
3	64 Acres East	USFS	Location, water trail access	Adjacent uses, federal ownership
5	Tahoe SRA	State Parks	Adjacent to existing camping	Land capability
6	Burton Creek	State Parks	Location	Not compatible with proposed uses
7	Lake Forest-North	CTC	Location	Grade and highway constraints
8	Lake Forest-South	State Parks	Water trail access	Adjacent uses, access constraints
9	Lake Forest Glen	CTC	Location	Limited dimensionally
12	Skylandia	State Parks	Water trail access	Adjacent uses
14	Firestone	Placer County	Location	Proposed uses

ID	PROPERTY NAME	OWNER	AVAILABLE AREA (ac)
1	64 Acres South	USFS	11.0
2	64 Acres North	USFS	4.69
3	64 Acres East	USFS	7.23
4	TCGC	TCPUD	27
5	Tahoe SRA	State Parks	4.97
6	Burton Creek	State Parks	6.98
7	Lake Forest-North	CTC	5.43
8	Lake Forest-South	State Parks	2.41
9	Lake Forest Glen	CTC	7.93
10	Highlands West	TCPUD/CTC	32.9
11	Highlands East	TCPUD	12.8
12	Skylandia	State Parks	23.3
13	Nahas	Placer County	10.8
14	Firestone	Placer County	73.9
15	North Field	TTUSD	2.37
16	Rideout	TTUSD	11.6



Pomin Park + Polaris Creek Project



Presentation of Survey Results

40 interviews at Pomin Park on Saturday, October 5, 2019

- Approximately 25% were at Pomin Park for the first time
- Approximately 35% utilize Pomin Park 10-20 times per year
- Approximately 40% utilize Pomin Park over 20 times per year

16 Surveys completed between October 5 - November 5, 2019

- 2 focused on campground
- 14 focused on ballfield

Overview

Strong Support for Polaris Creek Restoration

Support to Relocate the Campground and Ballfields

Strong Need for Athletic Fields in Tahoe City

Favorite Features of Pomin Park & Desired Features of a New Location

Pomin Park + Polaris Creek Project



Presentation of Survey Results

Strong Support for Polaris Creek Restoration

- Almost all respondents think restoration is favorable
 - Build walkable, raised trails for dog walking and bird watching
- A few mentioned the importance for a net ecological benefit in relocation

Strong Support to Relocate the Campground

- Reasons include campground conditions and restoration priorities
- Relocation of sites to Burton Creek campground suggested
- A few suggest retaining campground access at Pomin Park

Support to Relocate the Ballfields

- All like the convenience, beauty and amenities of Pomin Park
- Most consider restoration efforts worth relocating the ballfields
- Some think public funds are better spent on other projects, Pomin Park should remain as is or fields could be consolidated to allow for limited restoration

Pomin Park + Polaris Creek Project



Presentation of Survey Results

Strong Need for Athletic Fields in Tahoe City

- All expressed the need to replace the ballfields before restoring Polaris Creek
- Many would like to see additional recreation amenities added to a relocation site
 - Additional fields to support additional programming

Favorite Features of Park & Desired Features of a New Location

- Safe, convenient, well maintained, bikeable
- Bathrooms, parking, playground, walking trails
- Additional parking and recreation facilities, centrally located
- Firestone property most frequently mentioned as a preferred site
- Mixed responses on relocation to North Tahoe High School fields
 - Cons: Too far from highway, difficult parking
 - Pros: Easy to access, safe and well maintained

Pomin Park + Polaris Creek Project



Next Steps

- Feasibility Study finalized in early 2020
- Seek funding for next phase – environmental documentation, further restoration design and relocation site design.
- LOTS more opportunity to be engaged – we are still very early!



Nicole Cartwright

Executive Director

Office: 530.543.1501 x111 | ncartwright@trcd.org